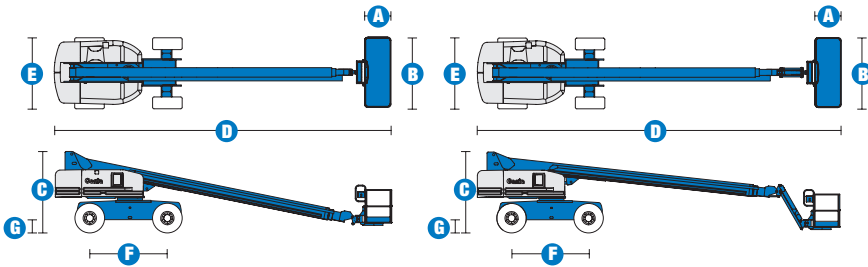


# Specifications



MODELS	S™-80		S™-85	
	Metric	US	Metric	US
Working height maximum*	26.38 m	86 ft	27.90 m	91 ft
Platform height maximum	24.38 m	80 ft	25.90 m	85 ft
Horizontal reach maximum	22.07 m	72 ft 5 in	23.60 m	77 ft 5 in
Below ground reach	3.12 m	10 ft 3 in	4.19 m	13 ft 9 in
A Platform length - 8 ft model	91 cm	3 ft	91 cm	3 ft
Platform length - 6 ft model	76 cm	2 ft 6 in	76 cm	2 ft 6 in
B Platform width - 8 ft model	2.44 m	8 ft	2.44 m	8 ft
Platform width - 6 ft model	1.83 m	6 ft	1.83 m	6 ft
C Height - stowed	2.80 m	9 ft 2 in	2.80 m	9 ft 2 in
D Length - stowed	11.35 m	37 ft 3 in	12.37 m	40 ft 7 in
Length - transport (jib tucked under)			10.67 m	35 ft
E Width - axles retracted	2.44 m	8 ft	2.44 m	8 ft
Width - axles extended	3.07 m	10 ft 1 in	3.07 m	10 ft 1 in
F Wheelbase	2.74 m	9 ft	2.74 m	9 ft
G Ground clearance - centre	43 cm	1 ft 5 in	43 cm	1 ft 5 in

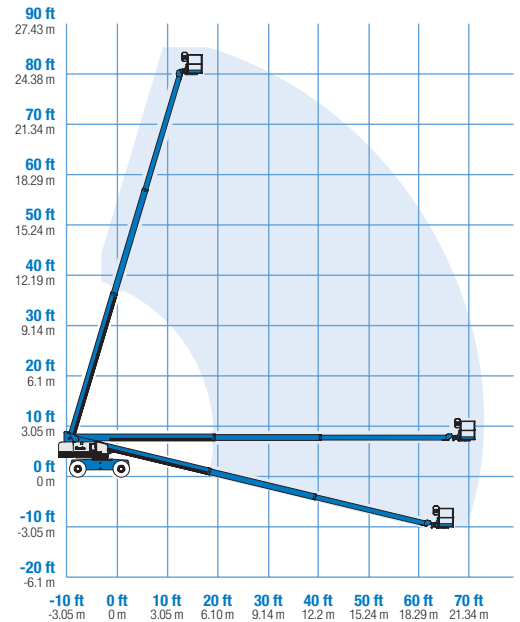
PRODUCTIVITY				
Lift capacity - 6 ft platform	272 kg	600 lbs	227 kg	500 lbs
Lift capacity - 8 ft platform	227 kg	500 lbs	227 kg	500 lbs
Platform rotation	160°	160°	160°	160°
Turntable rotation	360° continuous		360° continuous	
Turntable tailswing - axle retracted	1.42 m	4 ft 8 in	1.42 m	4 ft 8 in
Turntable tailswing - axle extended	1.12 m	3 ft 8 in	1.12 m	3 ft 8 in
Drive speed - stowed	5.6 km/h	3.5 mph	5.6 km/h	3.5 mph
Drive speed - raised/extended	1.1 km/h	0.68 mph	1.1 km/h	0.68 mph
Gradeability** - stowed 2WD	30%	30%	30%	30%
Gradeability** - stowed 4WD	45%	45%	45%	45%
Turning radius - axle extended: inside	3.25 m	10 ft 8 in	3.25 m	10 ft 8 in
outside	7.01 m	23 ft	7.01 m	23 ft
Controls	12 V DC proportional		12 V DC proportional	
Tyres - RT lug	385/65 D22.5		385/65 D22.5	

POWER				
Power source	Deutz BF4L 2011 4 cylinder diesel 78 hp (58.1 kW)			
Auxiliary power unit	12 V DC	12 V DC	12 V DC	12 V DC
Hydraulic tank capacity	170 L	45 gal	170 L	45 gal
Fuel tank capacity	125 L	33 gal	125 L	33 gal

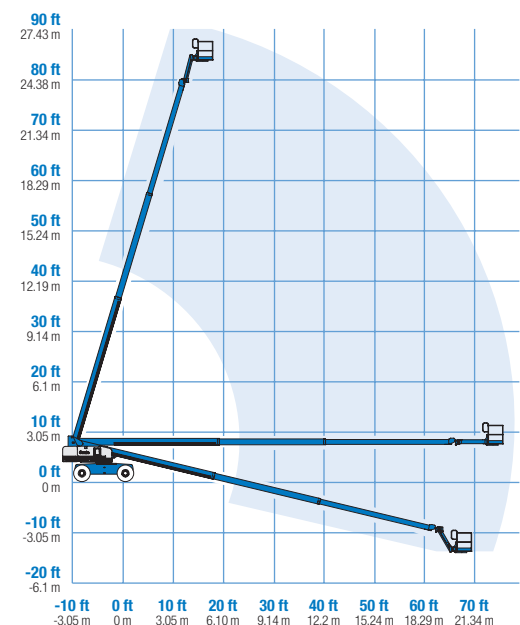
WEIGHT***				
2WD	15,073 kg	33,230 lbs	16,198 kg	35,710 lbs
4WD	15,141 kg	33,380 lbs	16,266 kg	35,860 lbs

STANDARDS COMPLIANCE	CE EN280, PB-10-611-03
----------------------	------------------------

## RANGE OF MOTION S™-80



## RANGE OF MOTION S™-85



\* The metric equivalent of working height adds 2 m to platform height. U.S. adds 6 ft to platform height.  
 \*\* Gradeability applies to driving on slopes. See Operator's Manual for details regarding slope ratings.  
 \*\*\* Weight will vary depending on options and/or country standards.

## Features

### EASILY CONFIGURED TO MEET YOUR NEEDS

#### PLATFORM OPTIONS

- Steel 2.44 m (8 ft) (standard)
- Steel 1.83 m (6 ft)
- Steel 1.83 m or 2.44 m (6 ft or 8 ft) tri-entry

#### JIB OPTIONS

- Non-jib
- 1.52 m (5 ft) jib boom

#### POWER OPTIONS

- Deutz diesel 58.1 kW (78 hp)

#### DRIVE OPTIONS

- 2 x 4
- 4 x 4

#### AXLE

- Active oscillation

#### TYRE OPTIONS

- Rough terrain, air-filled (standard)
- Rough terrain, foam-filled
- Rough terrain, non-marking (air or foam-filled)

### STANDARD FEATURES

#### MEASUREMENTS

##### S™-80

- 26.38 m (86 ft) working height
- 22.07 m (72 ft 5 in) horizontal reach
- 272 kg (600 lb) lift capacity with 1.83 m (6 ft) platform
- 227 kg (500 lb) lift capacity with 2.44 m (8 ft) platform

##### S™-85

- 27.90 m (91 ft) working height
- 23.60 m (77 ft 5 in) horizontal reach
- 227 kg (500 lb) lift capacity with 1.83 m (6 ft) platform
- 227 kg (500 lb) lift capacity with 2.44 m (8 ft) platform

#### PRODUCTIVITY

- Self-levelling platform
- Hydraulic platform rotation
- Fully proportional Hall effect joystick controls
- Drive enable
- AC power to platform
- Horn
- Hour meter
- Tilt alarm
- 360° continuous turntable rotation

### STANDARD FEATURES

#### PRODUCTIVITY cont.

- Locking low profile turntable covers
- Positive traction drive
- Two speed wheel motors
- Certified load sensor

#### POWER

- All engines are emissions compliant
- 12 V DC auxiliary power
- Anti-restart engine protection
- Auto engine fault shutdown
- Deutz intake heater



### OPTIONS & ACCESSORIES

#### PRODUCTIVITY

- 340 kg (750 lb) capacity S™-80 only
- Platform swing gate
- Half mesh platform inserts with swing gate
- Platform top auxiliary rail
- Air line to platform
- Hydraulic oil cooler
- Arctic hydraulic oil
- Arctic hoses package
- Basic hostile environment kit
- Deluxe hostile environment kit
- Deluxe aircraft protection package (6 ft platform only)
- Thumb rocker steer
- Tool tray
- Fluorescent tube caddy
- Pipe cradle (pair)
- Alarm package
- Panel cradle package\*
- Platform work lights
- Front driving lights
- Lockable platform control box covers
- Second battery
- Tow package

\* Available on select models

#### POWER

- Engine gauge package
- AC generator packages (3000 or 3500 watts)
- Cold start packages
- Diesel scrubber/spark arrestor
- Diesel spark arrestor muffler

### European Offices

#### UK

The Maltings  
Wharf Road  
Grantham NG31 6BH  
UK  
Tel: +44 (0)1476 584333  
Fax: +44 (0)1476 584334

#### France

10, ZA de la Croix St. Mathieu  
28320 Gallardon  
France  
Tel: +33 (0)2 37 26 09 99  
Fax: +33 (0)2 37 26 09 98

#### Germany

Finienweg 3  
28832 Achim/Bremen  
Germany  
Tel: +49 (0)4202 8852-0  
Fax: +49 (0)4202 8852-25

#### Spain

Gaià 31, Pol. Ind. Plà d'en Coll  
08110 Montcada i Reixac  
Barcelona  
Spain  
Tel: +34 93 572 50 90  
Fax: +34 93 572 50 91

#### Scandinavia

Tagenevägen 72  
425 37 Hisings Kärra  
Sweden  
Tel: +46 31 57 51 00  
Fax: +46 31 57 90 20

### Genie United States

18340 NE 76th Street  
P.O. Box 97030  
Redmond, Washington 98073-9730  
USA  
Tel: +1 425 881-1800  
Fax: +1 425 883-3475

**WEB:** [www.genieindustries.com](http://www.genieindustries.com)  
**Email:** [infoeurope@genieind.com](mailto:infoeurope@genieind.com)

#### Distributed By: